

WESTSONG SENSORY GARDEN

for People with Vision Loss

Proposal Directive

WESTSONG SENSORY GARDEN for People with Vision Loss

Proposal Directive

The proposal for the Sensory Garden is a combination of inspired elements for all visitors. Though primarily designed for those with vision loss, the garden is meant to be accessible for all and to engage in understanding each others experiences.

The entrance to the Westsong Walkway off Head Street in Esquimalt is being proposed for this garden due to its accessibility by BC Transit, the West Bay and Songhees Walkway, and by Water Taxi. The terrain is ideal for mobility functionality. The land proposed for the garden possesses a rich history beginning with original and ongoing stewardship of Lekwungen People.



Maria Hendrikx and Laurie Ponsford with Bridget at the proposed site location entrance to Westsong Walkway

As a garden built among the Lekwungen territory, incorporating native plants is important, as is understanding the unique characteristics and uses for the plants and wildlife which sustains us. These plants are proposed to be brought forward in all the various garden designs, highlighting their distinctness and use.

A Bog Garden with a Bubbler Water Feature is one of the gardens. The design brings examples of the shoreline and Waterlife in Esquimalt. The bubbler in our Vancouver Island stone will have examples in concrete of animal wildlife to touch, examples of our Island stone types, and a midden of shells and bones. The bog garden will use water plants with native plant examples as well. It will be built to wheelchair height.



Example of a stone water bubbler



Examples of concrete animal sculptures; Octopus, Otter, Sea Stars



Mentha arvensis (native mint) for scent. *Sphagnum* moss (bog garden) for touch.

An exploratory garden of Mint with a large variety of mint types to touch and guess scents. This garden will include native mints and be raised to wheelchair height, as well.

A garden of various perennials and annuals in a raised bed at wheelchair height will have plants chosen for touch and scent, which will include native plants.

There will also be a colour deficient garden example at ground level, giving examples of texture and colour combinations that those with colour deficiency and those without experience differently.

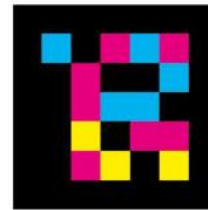


Dark/light contrast garden for vision loss and colour deficient.
Examples of colour deficient garden plants.

Wood or stone carvings at wheelchair height representing the Songhees Nation inviting visitors to the land and garden will make it welcome and accessible for those with vision loss to enjoy. A border garden at ground level will use larger perennials, shrubs and trees focusing with dark/light contrast of plants in order to highlight for those with vision loss, also including native species. This garden bed will use black mulch for enhanced contrast. Benches to relax, rest and reflect will be positioned toward this garden. QR codes, NaviLens, Braille, Lekwungen/English/French signage will make this park accessible for visitors. All pathways are to be designed as wheelchair accessible and cane user friendly. Elements to engage children and adults are important. A Vibroacoustic bench, child friendly park entertainment structures that are stand alone (not climbing) would be welcome.



Visitor information board to include 3D map of Westsong Sensory Garden



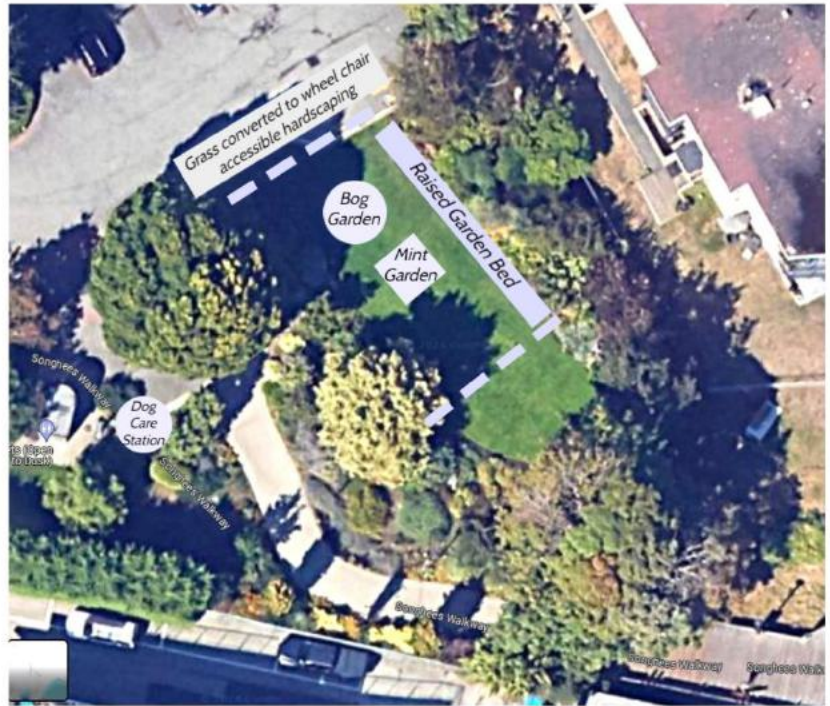
NaviLens and QR Code examples



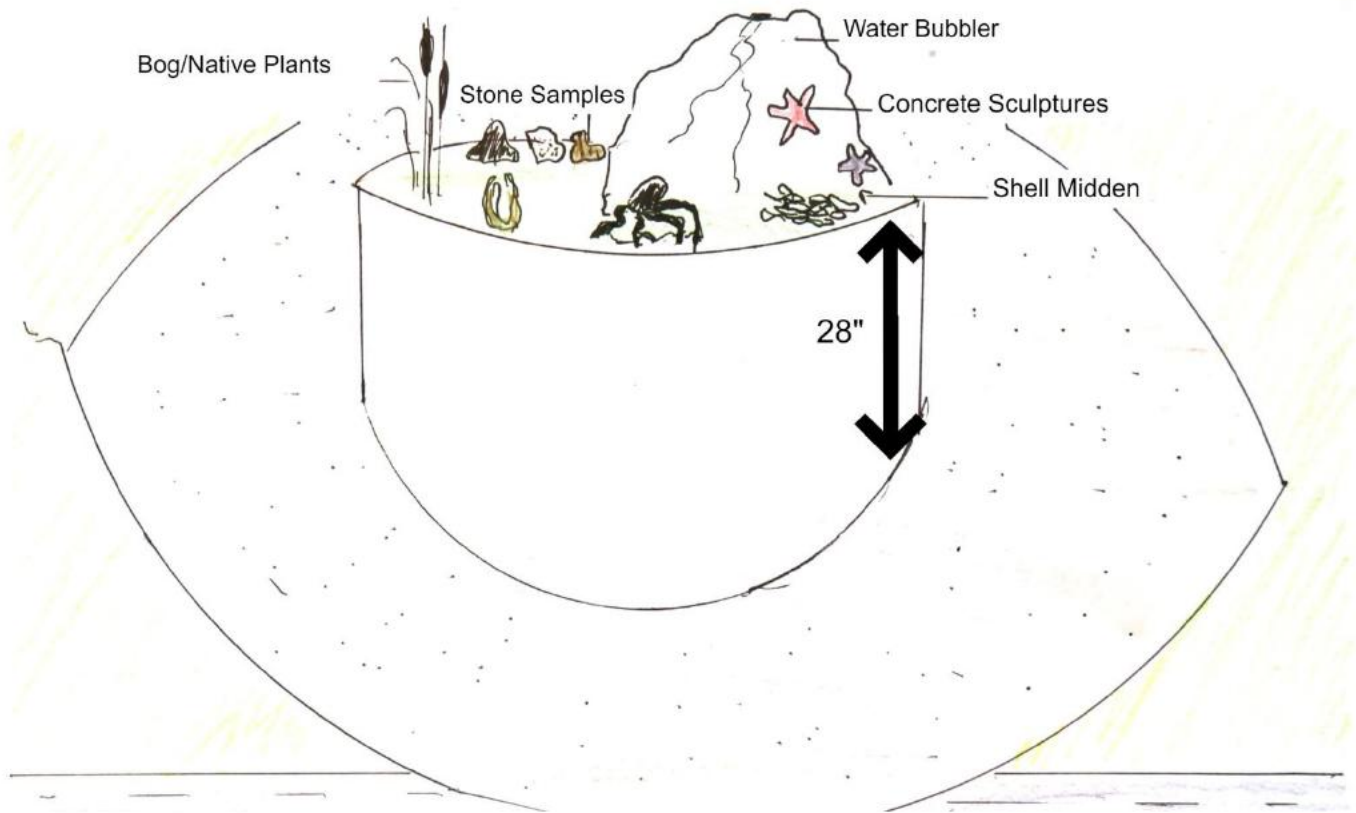
Accessible pathways



Westsong Sensory Garden map



Westsong Sensory Garden site map



Bog Garden elements

enchroma.



Color Blindness and EnChroma

Color blindness affects one in 12 men (8%) and one in 200 women (.5%); an estimated 350 million people worldwide



Westsong Sensory Garden colour defecient scenic viewer

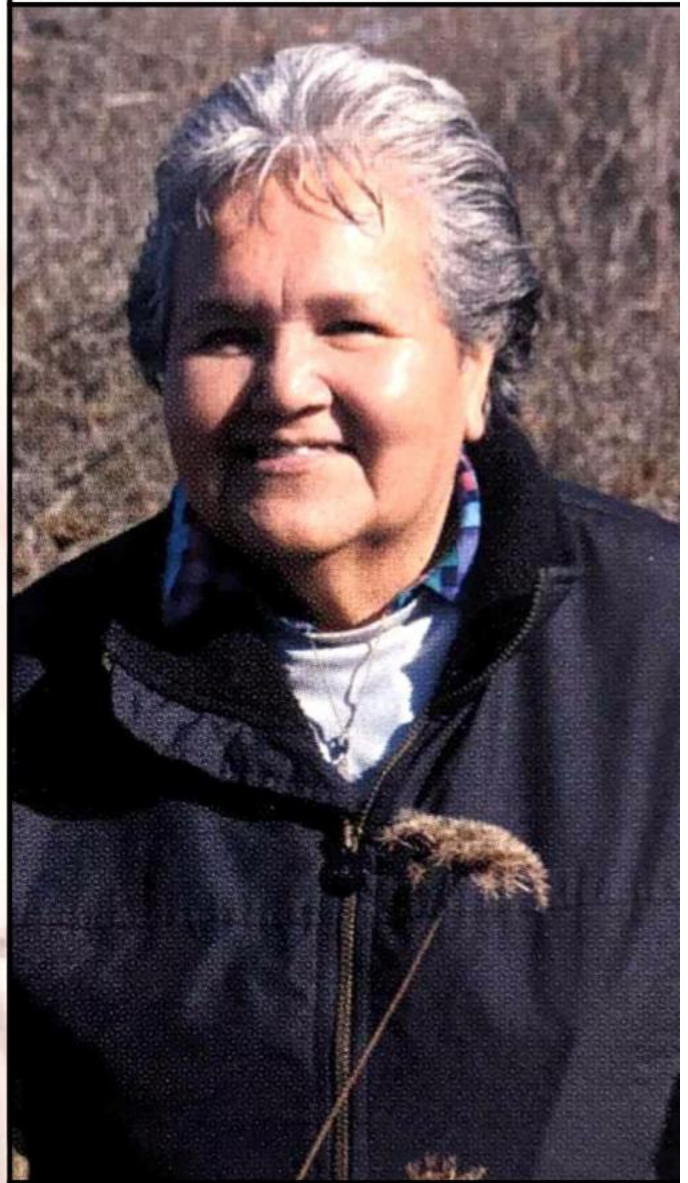


Somacoustic Platform Bench for sound sensory enjoyment



Somacoustic Sound Controller

"Granny Cecilia was blind from birth. She was a big encouragement to me when I became a young woman. This woman could knit gloves, toques, sweaters, socks. This woman would do designs on them. It's intricate planning the designs, but she did all that.... She used to put her arm in her son's, or whoever was available. She walked to town and back, and she was in her eighties. That's when we had just the one doctor to go to. She'd walk to that Telcumen Gorge, walk there and back.... She'd walk up there and back. I'll be 67 soon, and I try not to hobble. This woman was in her eighties and she was tough. They were tough in those days." ~Joan Morris



Excerpt from page 99 of Songhees, published in 2013

The Westsong Sensory Garden is an exciting place for exploration. Our ability to encourage fun and learning can represent the South Vancouver Island. The garden will make a great destination that highlights our unique features. This proposal was made with the encouragement and information of all in the contact list. The future of all who visit this garden will require all of our engagement (and future participants), which I fully acknowledge and look forward to working with. Please feel free to contact us if you have any questions regarding this project.



Laurie Ponsford, Person with Vision Loss and Maria Hendrikx, West Bay Rock Gardens

Thanks and Regards,

Maria Hendrikx, West Bay Rock Gardens
Laurie Ponsford, Person with Vision Loss

519-859-2015
250-381-3795

mariahendrikx1@gmail.com
laurieannponsford@gmail.com

WESTSONG SENSORY GARDEN

for People with Vision Loss

Proposal Directive